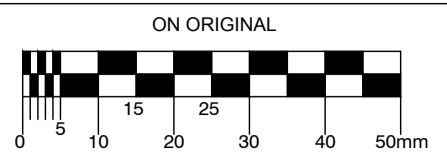


© COPYRIGHT OF THIS DRAWING IS RESERVED BY DBFL CONSULTING ENGINEERS. NO PART SHALL BE REPRODUCED OR TRANSMITTED WITHOUT THEIR WRITTEN PERMISSION.



- NOTES:
- GENERAL NOTES:**
1. ALL CO-ORDINATES ARE TO IRISH TRANSVERSE MERCATOR
 2. ALL LEVELS ARE TO ORDANCE DATUM MALIN HEAD
 3. ALL DIMENSIONS IN METERS UNLESS SPECIFIED OTHERWISE
 4. DO NOT SCALE FROM DRAWING

DRAWING NOTES:

- BUS FREQUENCIES:**
- ROUTE 15:**
10 Minutes (Weekdays)
15 - 20 Minutes (Weekends)
- ROUTE 27:**
10-15 Minutes (Weekdays)
20 Minutes (Weekends)
- ROUTE 27 X:**
2 Services in the AM/PM Peak
- ROUTE 42:**
30 Minutes (Weekdays)
20-30 Minutes (Weekends)
- ROUTE 43:**
60 Minutes (Weekdays)
45 - 70 Minutes (Weekends)

ORDNANCE SURVEY IRELAND LICENCE
No EN 0017917
© ORDNANCE SURVEY IRELAND
GOVERNMENT OF IRELAND

REV.	DATE	DESCRIPTION	BY	CHKD.
A	09/10/19	SHD STAGE 3 SUBMISSION	IC	NGC

PLANNING			
DESIGNED	NGC	PREPARED	PJC
DATE	APR 2019	CHECKED	DJR

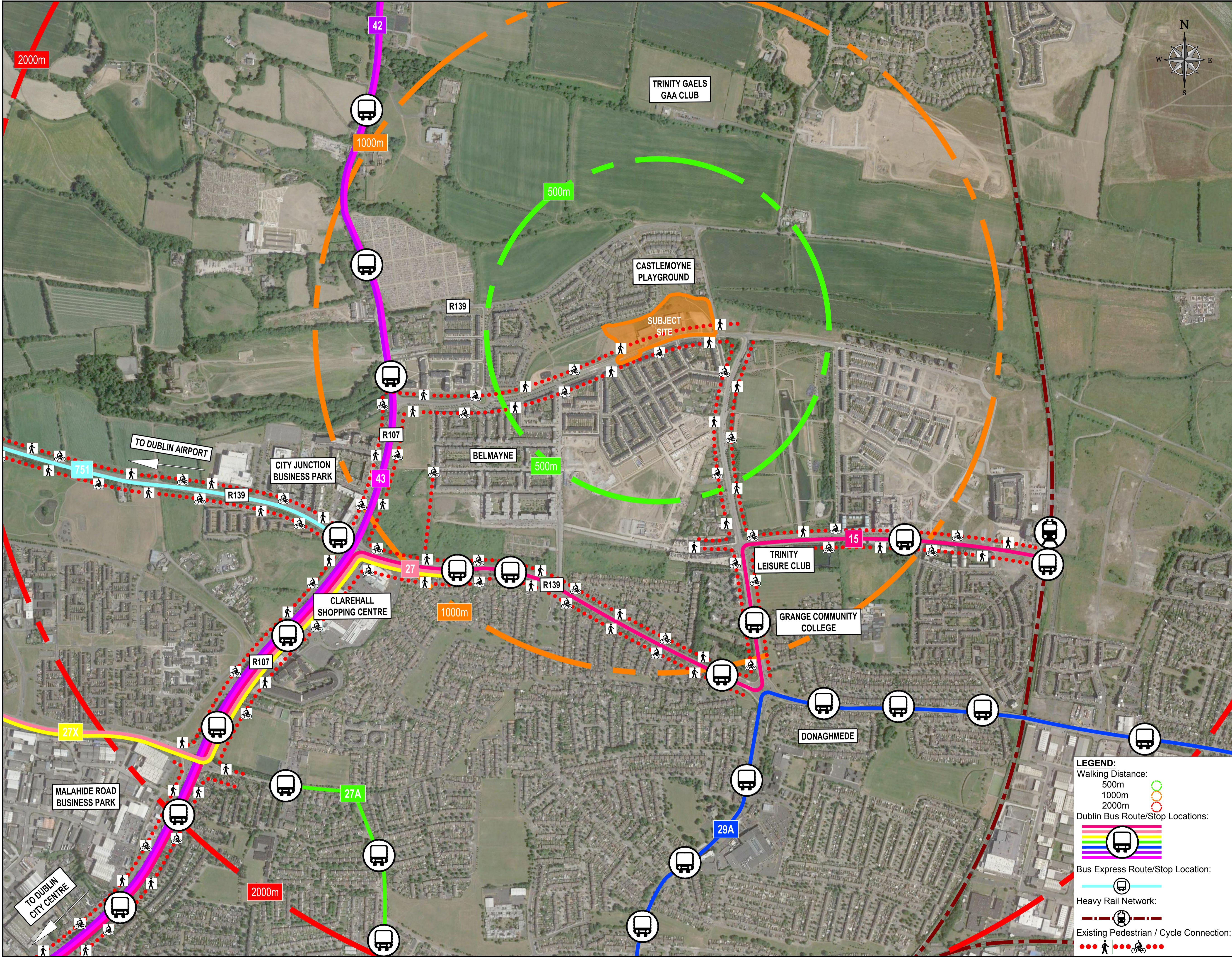
DBFL
Dublin Office: Ormrod House, Upper Ormrod Quay, Dublin 7, Ireland. PHONE: +353 1 400 4000 FAX: +353 1 400 4050
Waterford Office: Unit 2, The Chandlers, 1-2 O'Connell Street, Waterford, Ireland. PHONE: +353 51 338 550 FAX: +353 51 844 813
DBFL Consulting Engineers email: info@dbfl.ie site: www.dbfl.ie

PROJECT
**PARKSIDE 4,
PARKSIDE, DUBLIN 13**

DRG. TITLE
**EXISTING PUBLIC
TRANSPORTATION LINKAGES
PLAN**

CLIENT
**CAIRN HOMES PROPERTIES
LTD.**

SCALE	1:5000 @A1	FILE REF.	190011-1000
DRG. NO.	190011-1000		A



LEGEND:

Walking Distance:
500m (green circle)
1000m (orange circle)
2000m (red circle)

Dublin Bus Route/Stop Locations:
[Colorful bus icon]

Bus Express Route/Stop Location:
[Bus icon]

Heavy Rail Network:
[Red dashed line with train icon]

Existing Pedestrian / Cycle Connection:
[Red dotted line with pedestrian and cycle icons]